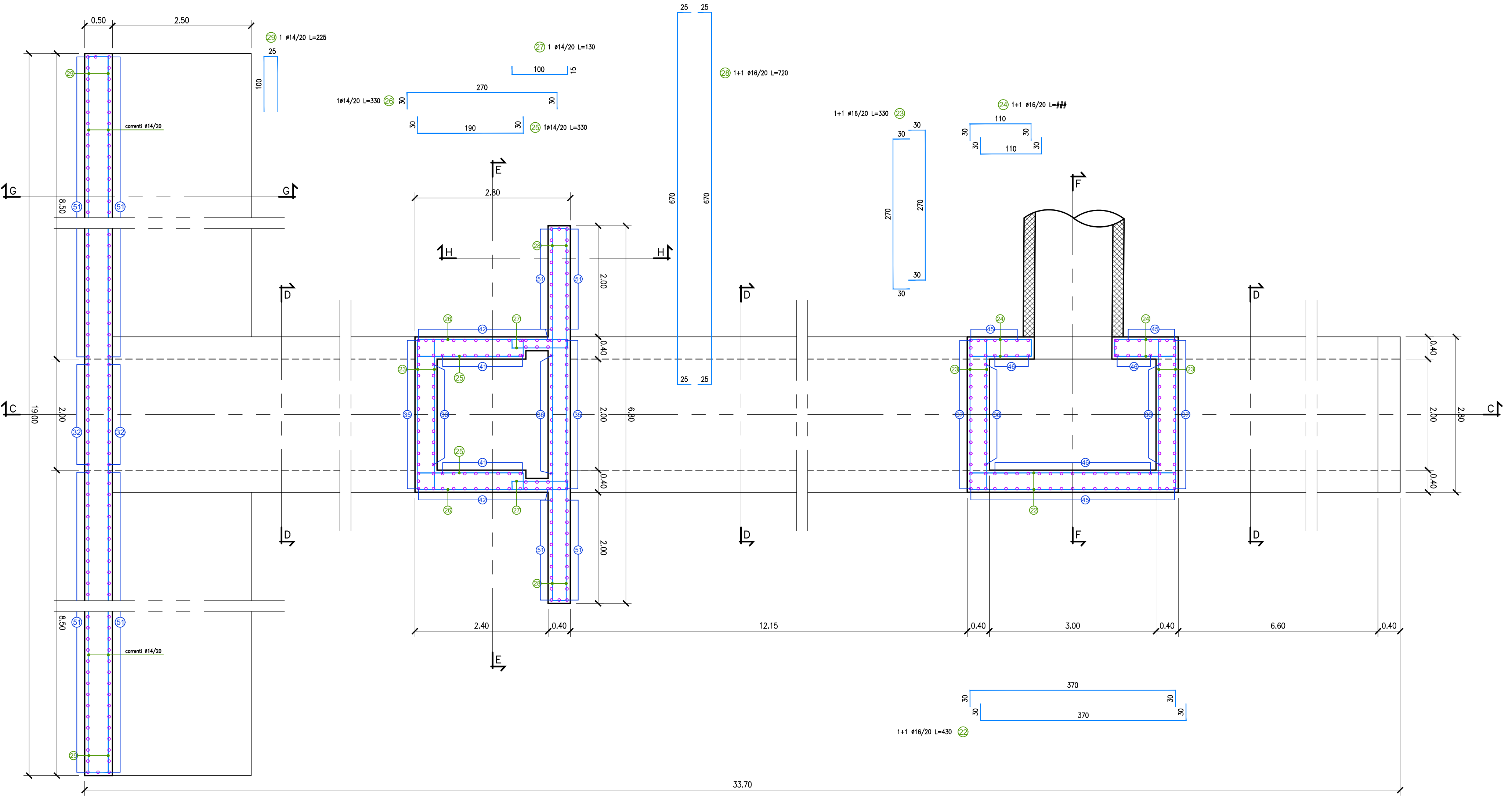
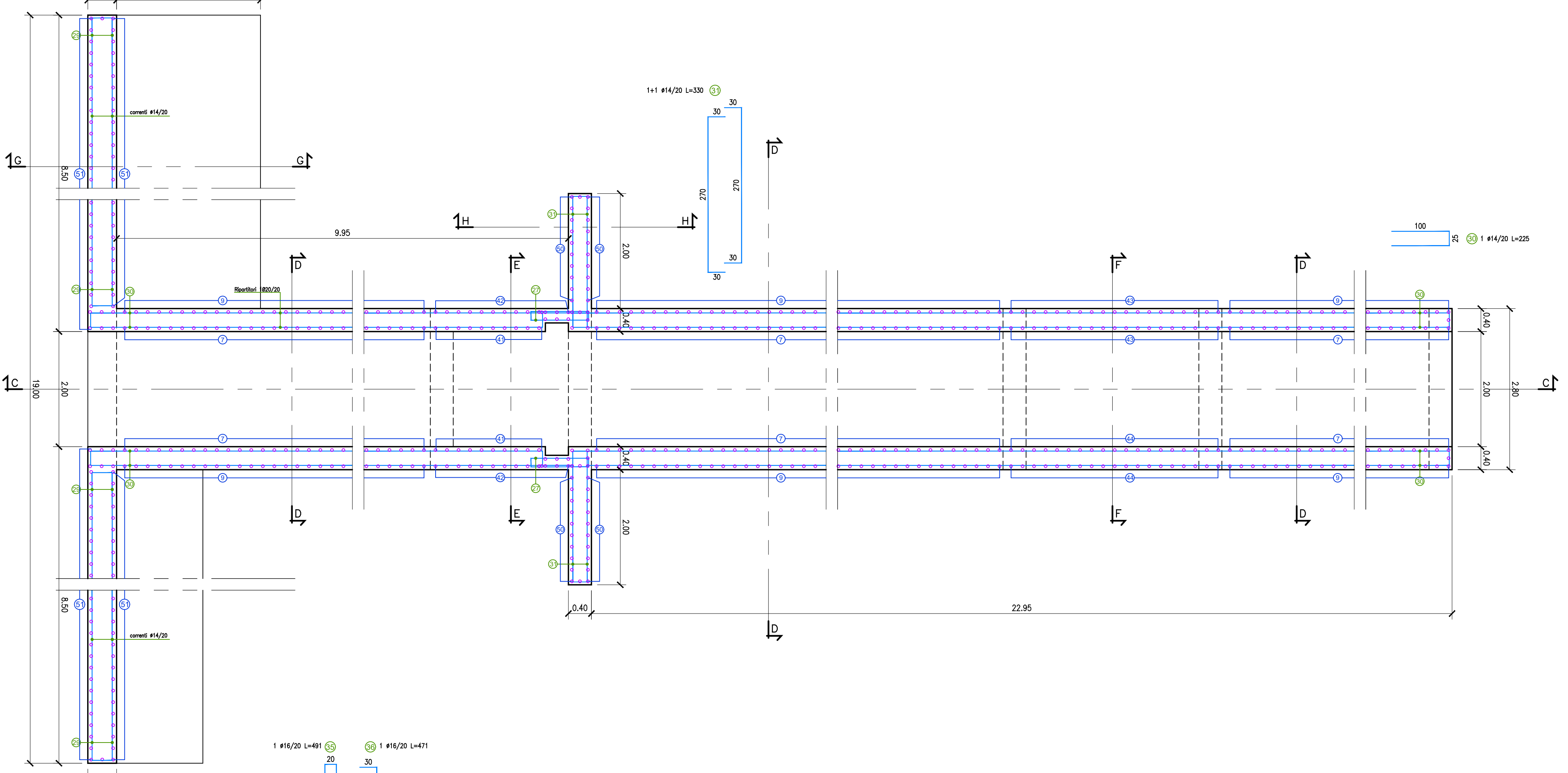


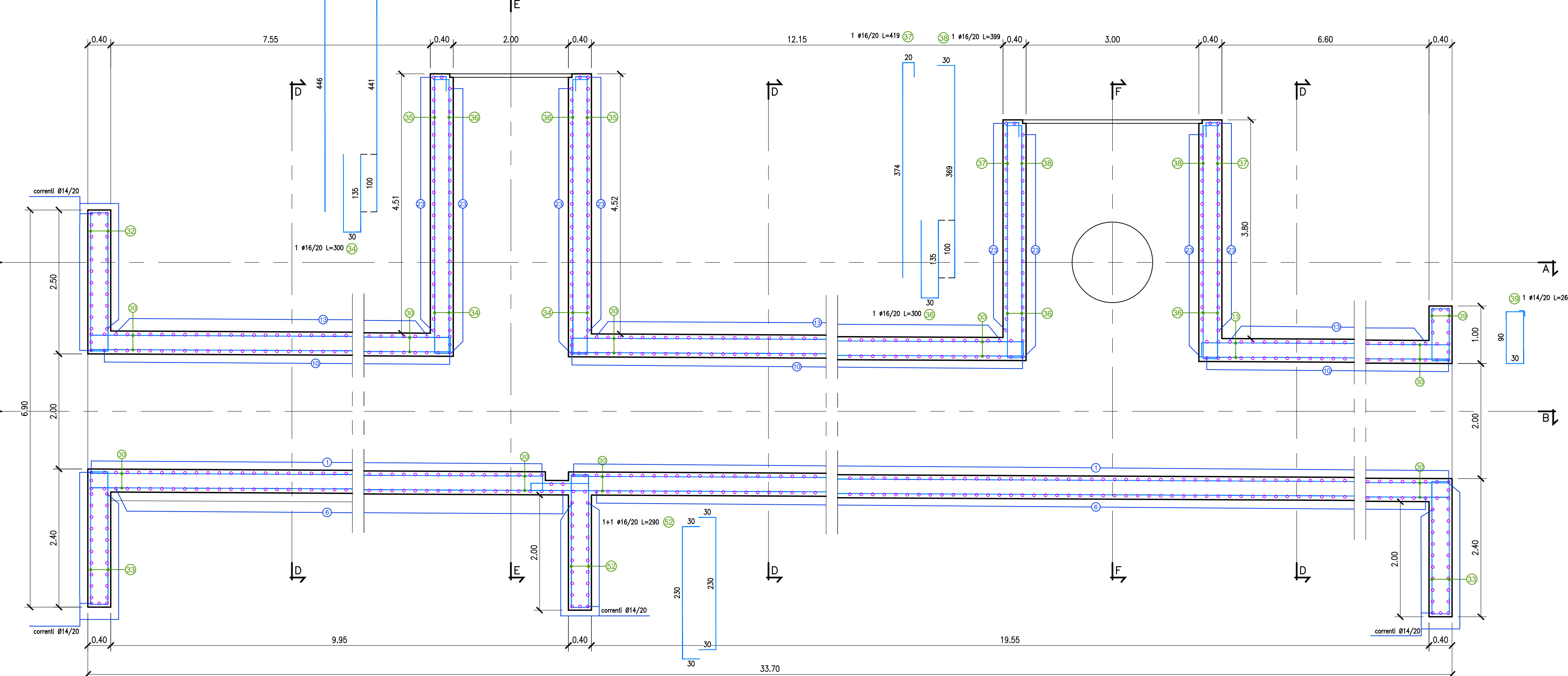
SEZIONE A-A - Scala 1:50



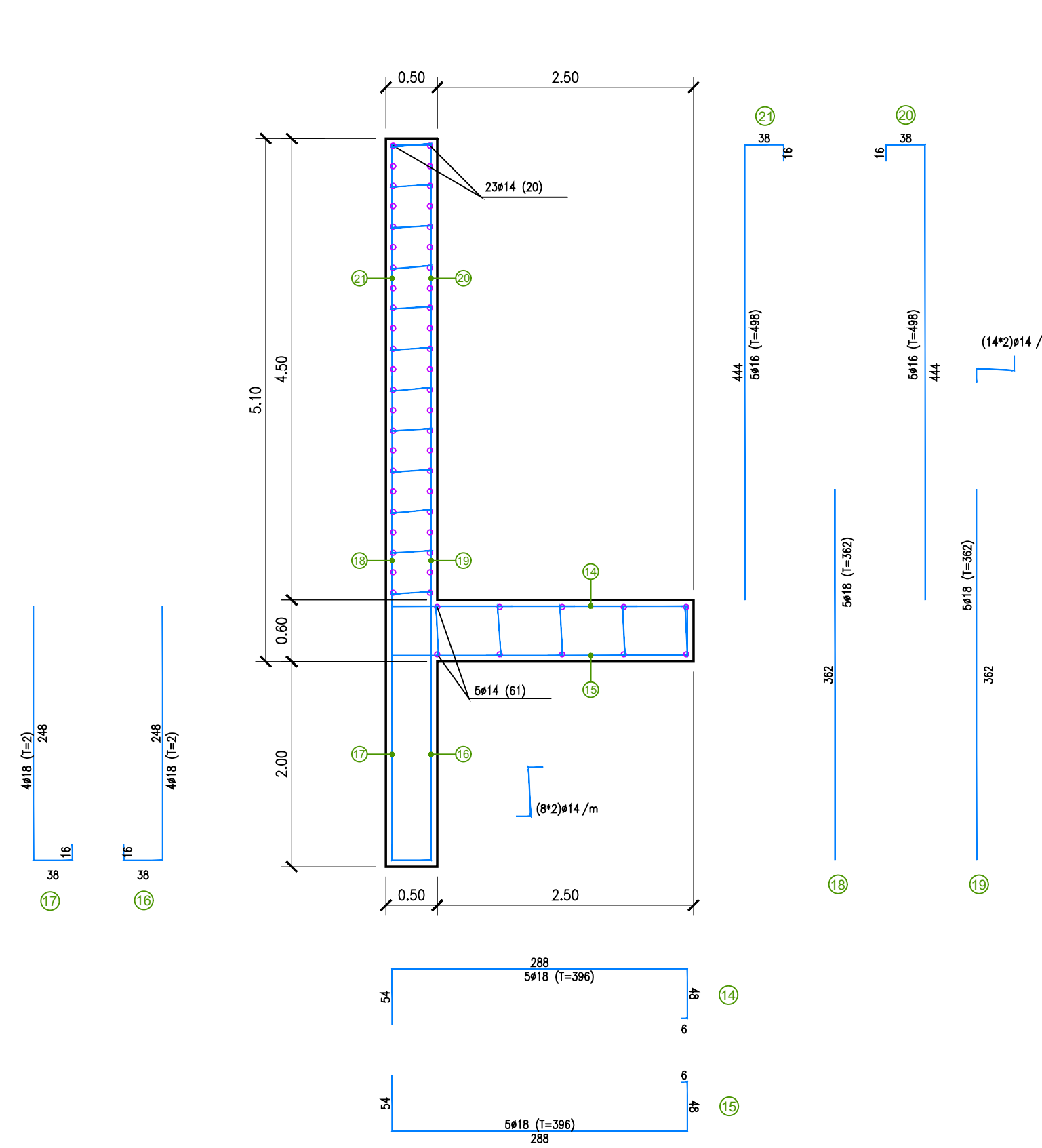
SEZIONE B-B - Scala 1:50



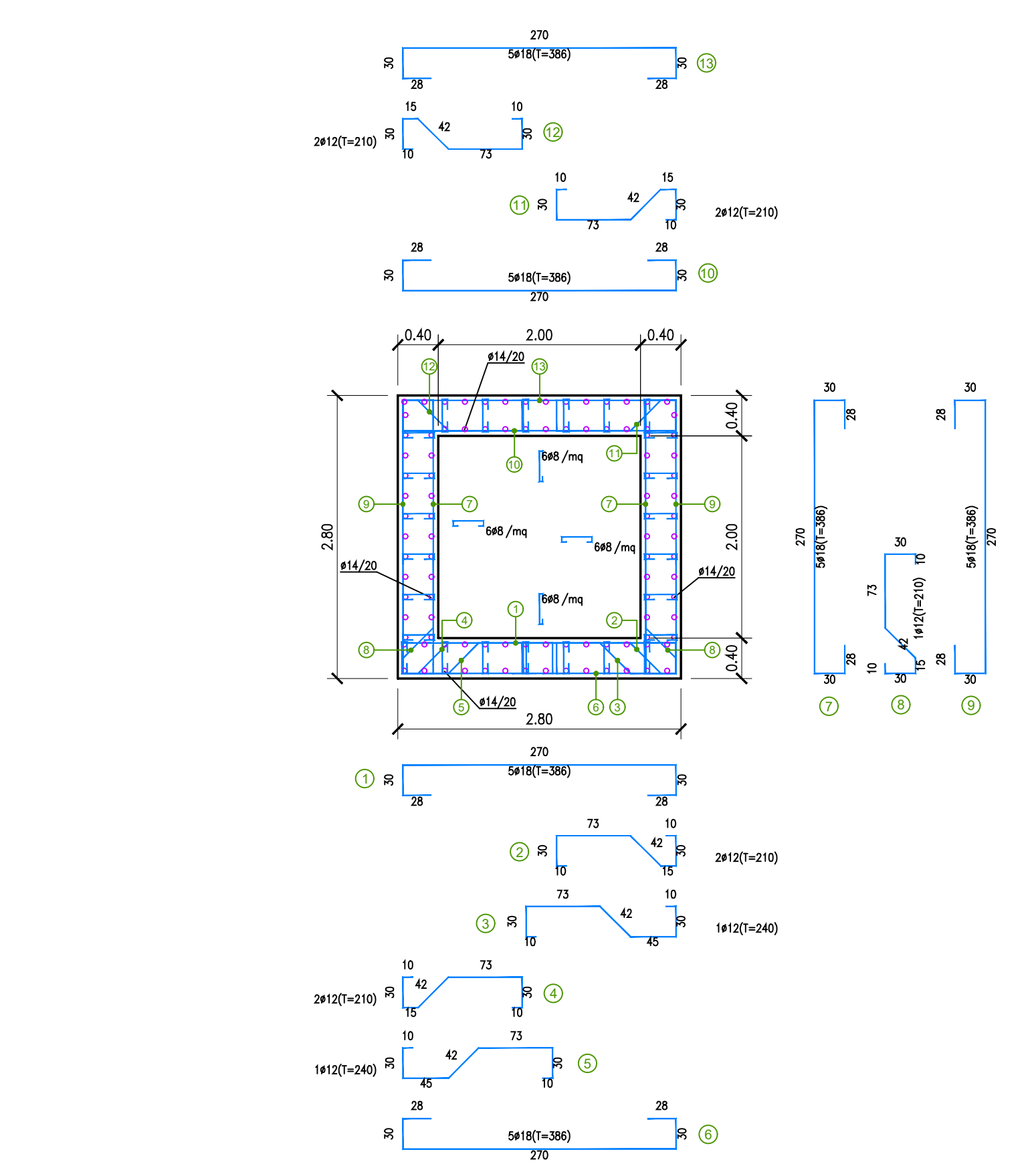
SEZIONE C-C - Scala 1:50



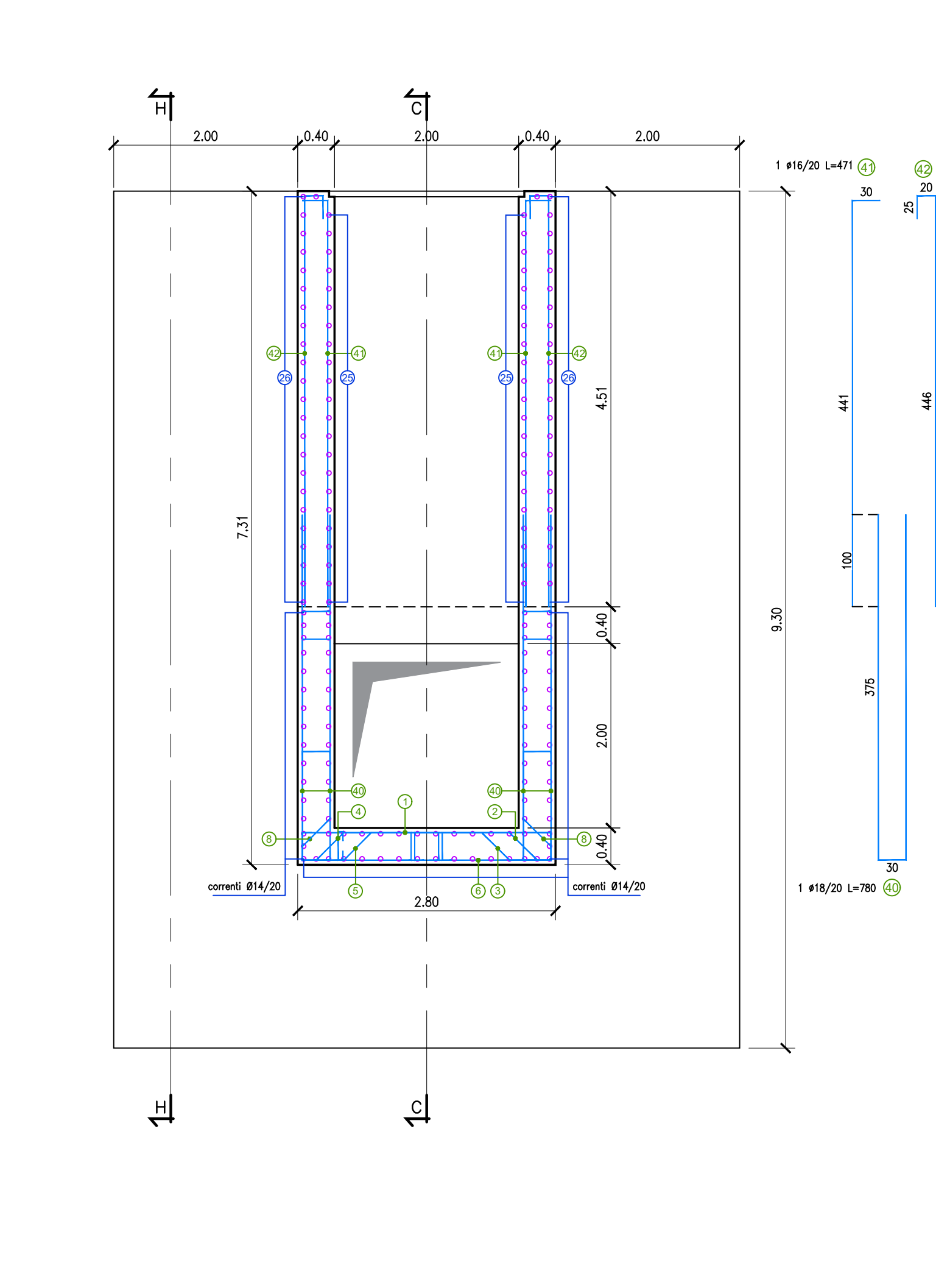
SEZIONE G-G - Scala 1:50



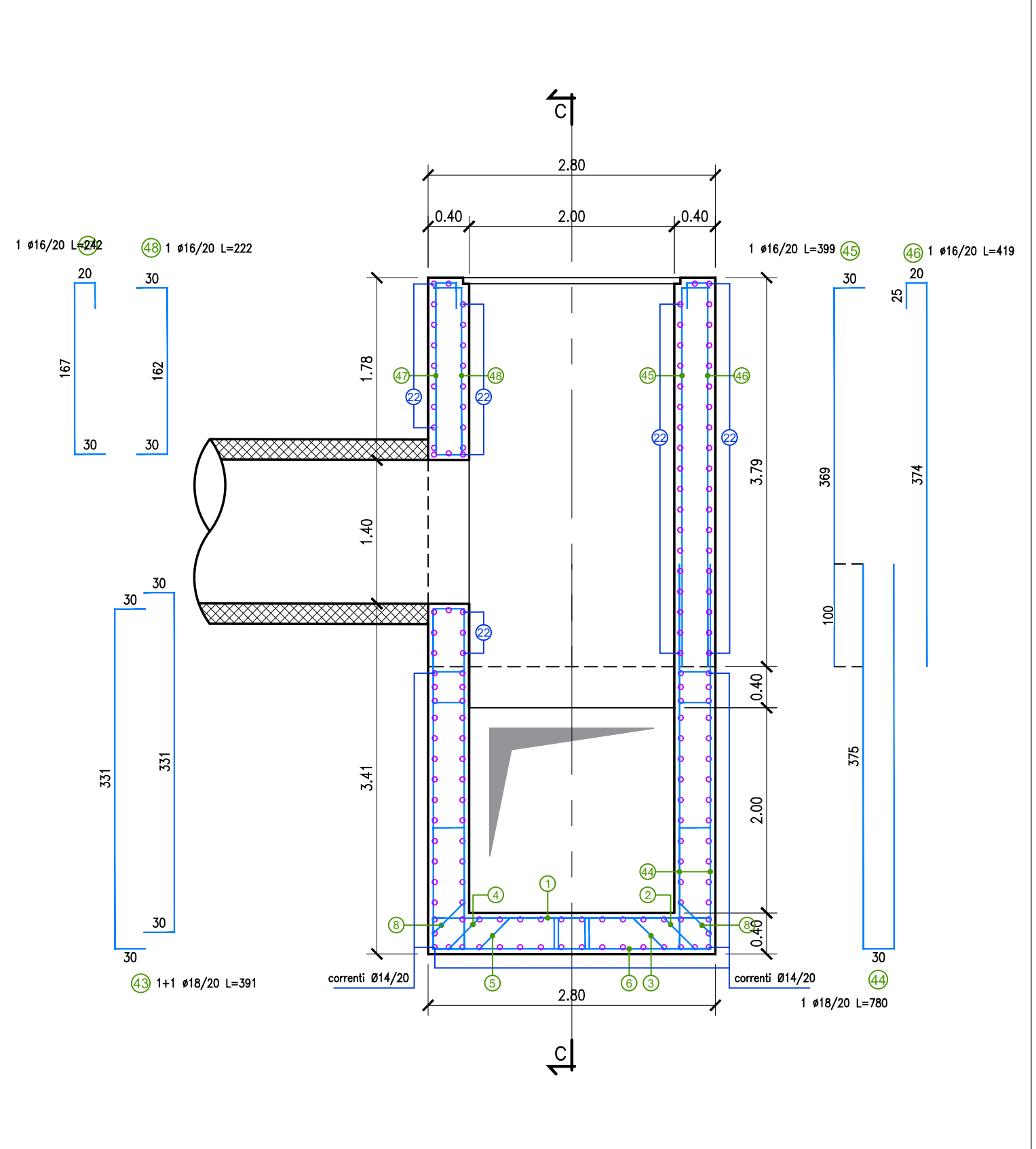
SEZIONE D-D - Scala 1:50



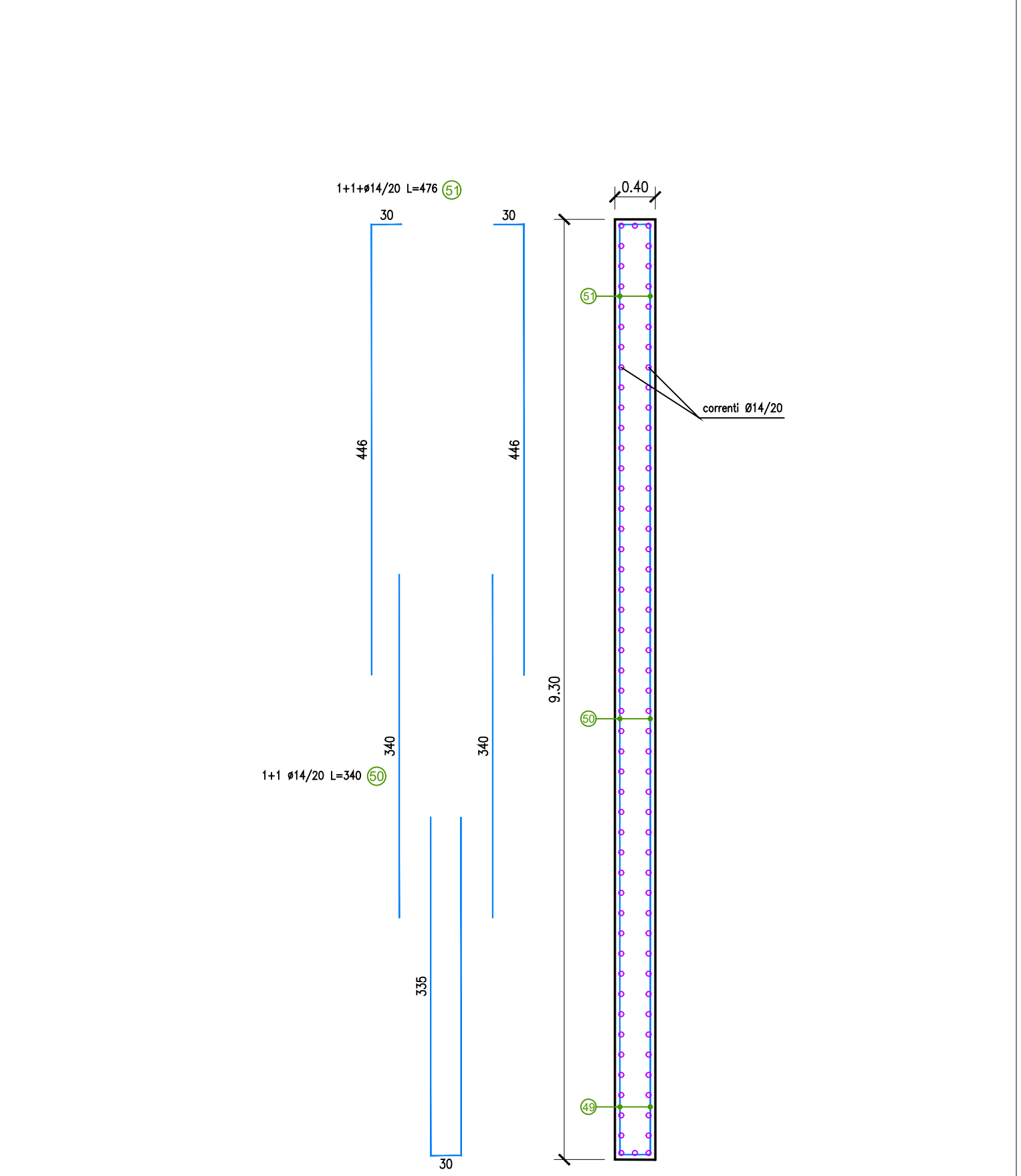
SEZIONE E-E - Scala 1:50



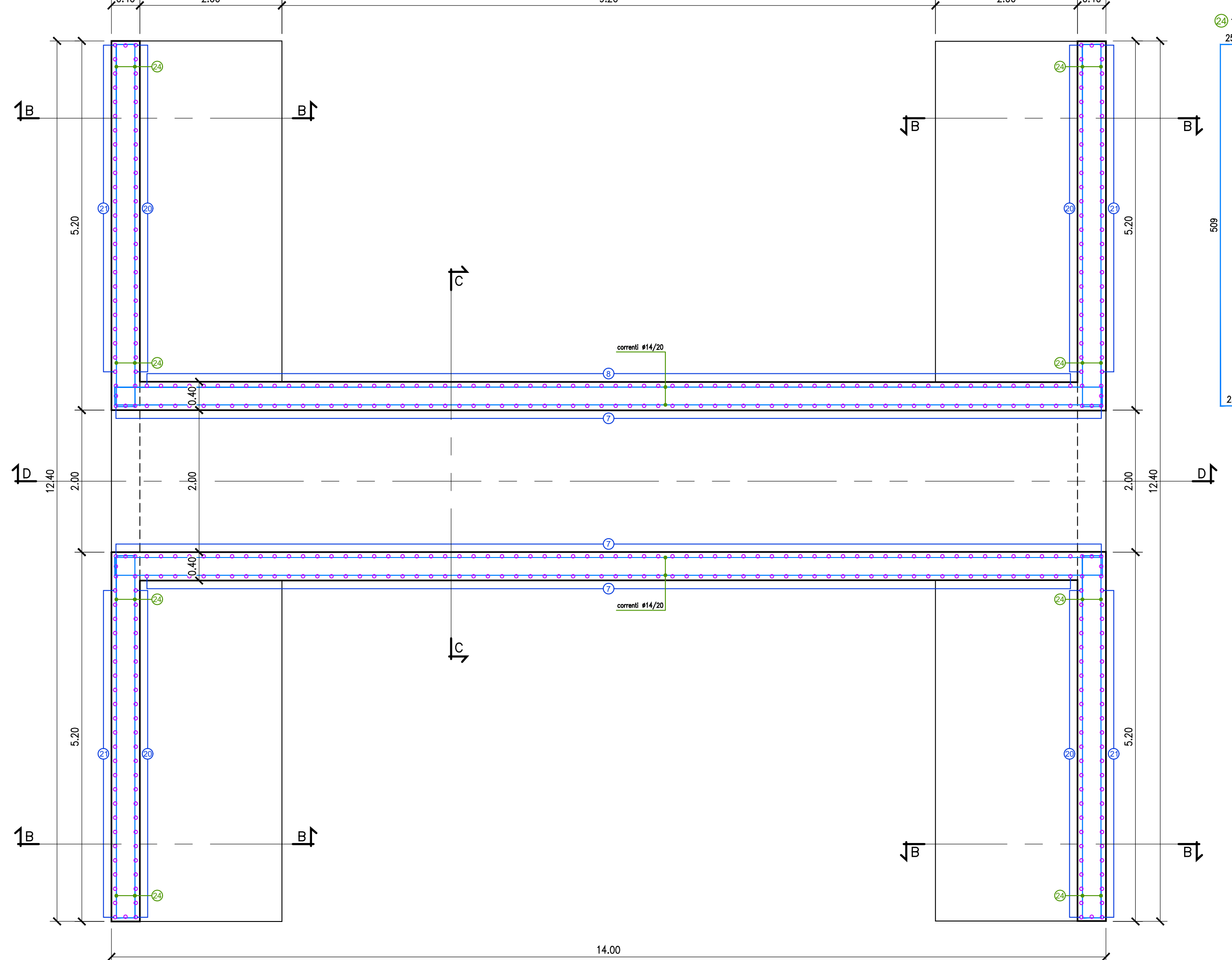
SEZIONE F-F - Scala 1:50



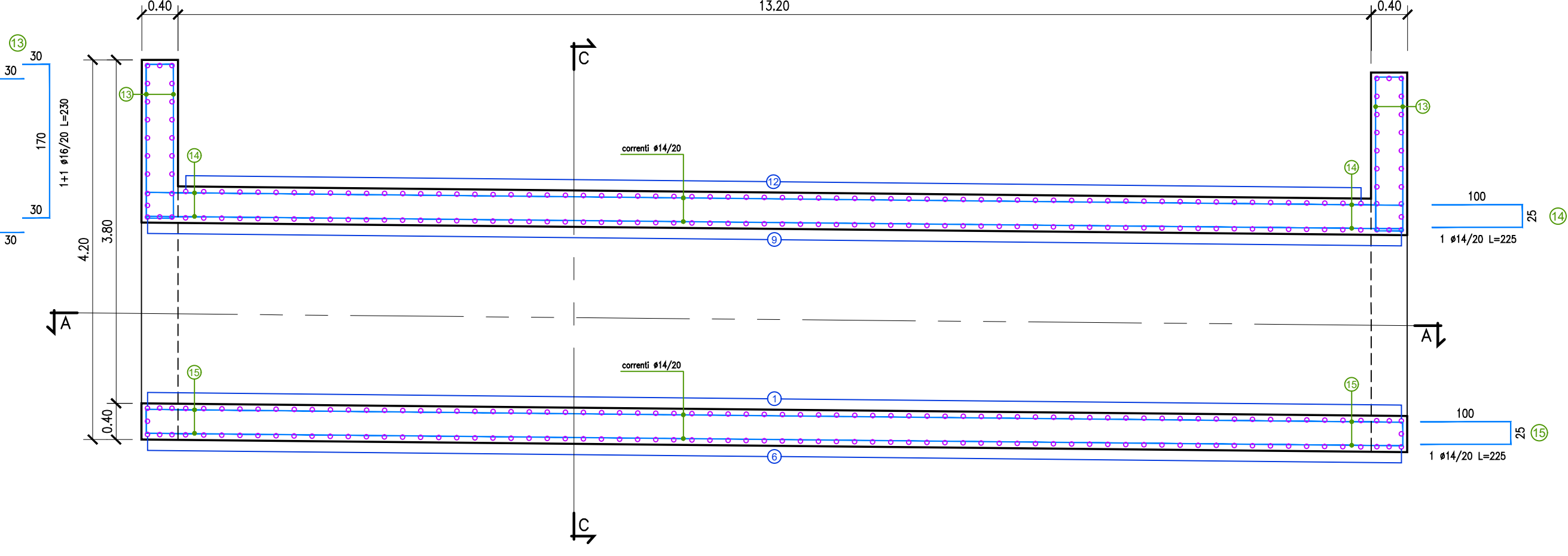
SEZIONE H-H - Scala 1:50



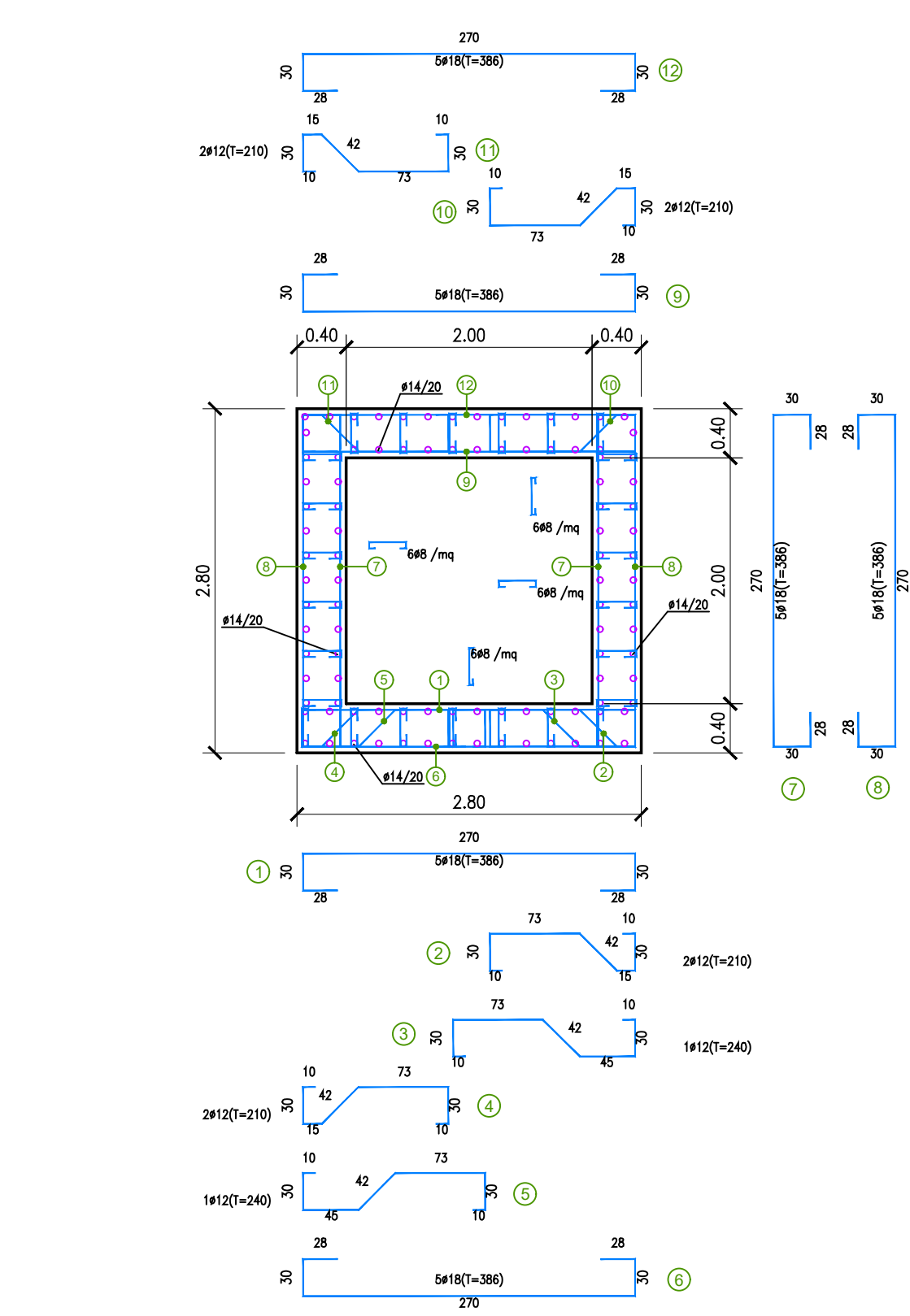
SEZIONE A-A - Scala 1:50



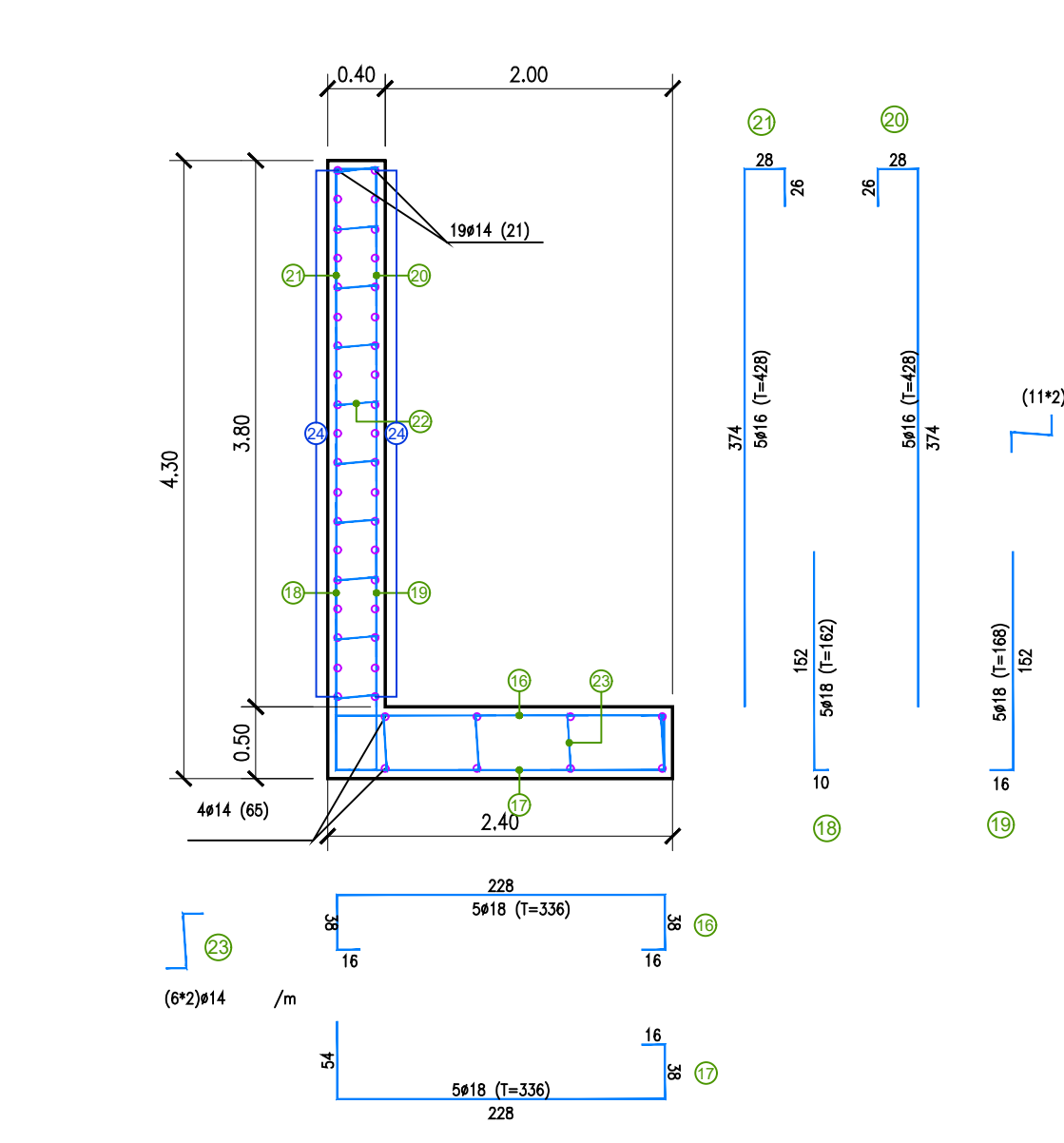
SEZIONE D-D - Scala 1:50



SEZIONE C-C - Scala 1:50



SEZIONE B-B - Scala 1:50









ART AD GC FR 08 01 08 005N 01



Via Garibaldi 75 - 43121 PARMA

**CASSA DI ESPANSIONE DEL TORRENTE BAGANZA
NEI COMUNI DI FELINO, SALA BAGANZA,
COLLECCHIO E PARMA (PR-E-1047)**

PROGETTO ESECUTIVO

01	04/2021	Revisione per osservazioni Nota DSD n. 7/556 del 15-04-2021 e validazione	CAMPI	FRESIA	BERTERO
02	07/2019	Prima emissione	CAMPI	FRESIA	BERTERO
REV.	DATA	MODIFICHE	REDAZIONE	VERIFICA	AUTORIZZ.
SISTEMAZIONE AMBIENTALE					
SCALA DI RISALITA PESCI E PISTA CICLABILE					
CARPENTERIE ED ARMATURE					
ASSOCIAZIONE TEMPORANEA DI IMPRESE					
<div><div> </div><div>   </div><div><div>assoc. temporanea di imprese</div><div>assoc. temporanea di imprese</div></div></div>					
IL R.U.P.:		Dipartimento Ingegneria e Tecnologie Dipartimento Ingegneria e Tecnologie della costruzione		Dipartimento Ingegneria e Tecnologie Dipartimento Ingegneria e Tecnologie della costruzione	
Dott. Ing. Mirella Vergnani (documento firmato digitalmente)		Dott. Ing. Roberto Bertero (documento firmato digitalmente)		Dott. Ing. Giuseppe Campi (documento firmato digitalmente)	